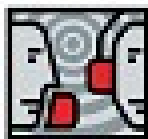


EasyLog 5

Bug fixed and new features

11 November 2005

author: Franco Pirrone - IW1DGL



EasyLog 5 main module – 5.1.0.26

#001

Added the possibility to export from print buffer in ADIF format with output path selection

#002

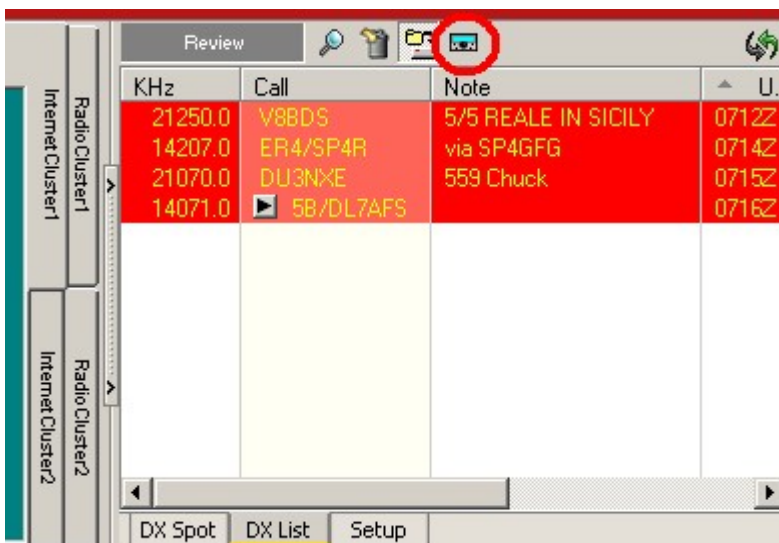
Added the possibility to select the path for ADIF (e-QSL) exporting from QSL buffer

#003

Search on all opened Log: it is now possible, from quick search windows (ALT+R), to select the circular research on current Log or on all opened Log if the check 'search on all opened Log' is checked. The keyboard accelerator F3 has been added and acts as the 'Continue' button.

#004

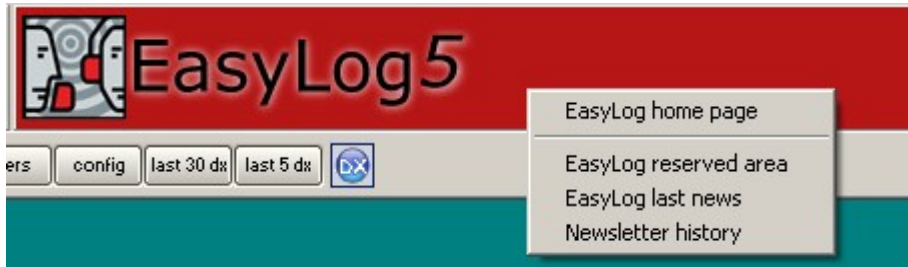
A Radio button added to DX-List, now it is possible to tune the selected DX-Spot even before to evaluate it (double clicking). When no spots of the DX-List are currently selected, the last spot received will be tuned. We have also added a keyboard accelerator SHIFT+CTRL that has the same function of DX-List radio button.



#005

Now the EasyLog 5 logo visible in the upper right corner of the main EasyLog 5 screen on EL5 main module is mouse sensitive. Doubleclicking the logo the home page of easylog.com will be opened. The home page will be the one correspondent to your installed language if available in the easylog.com web site otherwise english will be automatically selected.

By clicking with the right mouse button, a pop up menu will be opened, from where you can select home page, reserved area, last news and newsletter archive)



#006

Language resource file revisions

- Hint added to the new radio button of DX-List window
- Grayline window had an hard coded title in Italian
- Some other fixes in Edit QSO, QSL section and Print section.

-

#007

Talk window inside DX-Cluster is now left opened to support consecutive talks with the same or other DX-Cluster users.

#008

Added a control to avoid multiple session of EL5.

#009

Print manager address, the only character accepted as carriage return was ',' now accepts both ',' than ';'.

#010

CHECK engine (Award recognition algorith)

Calssign as IK1GPG/MM or IK1GPG/M were recognized as Italy since /M and /MM were considered respectively /mobile and /sea mobile. Since /M and /MM could also be a real portable from England and Scotland, we decided to consider M/ and MM/ as valid portable station. So if you need to log callsign like: IK1GPG/M or IK1GPG/MM meant as portable station from England or Scotland please log them as:

M/IK1GPG
MM/IK1GPG

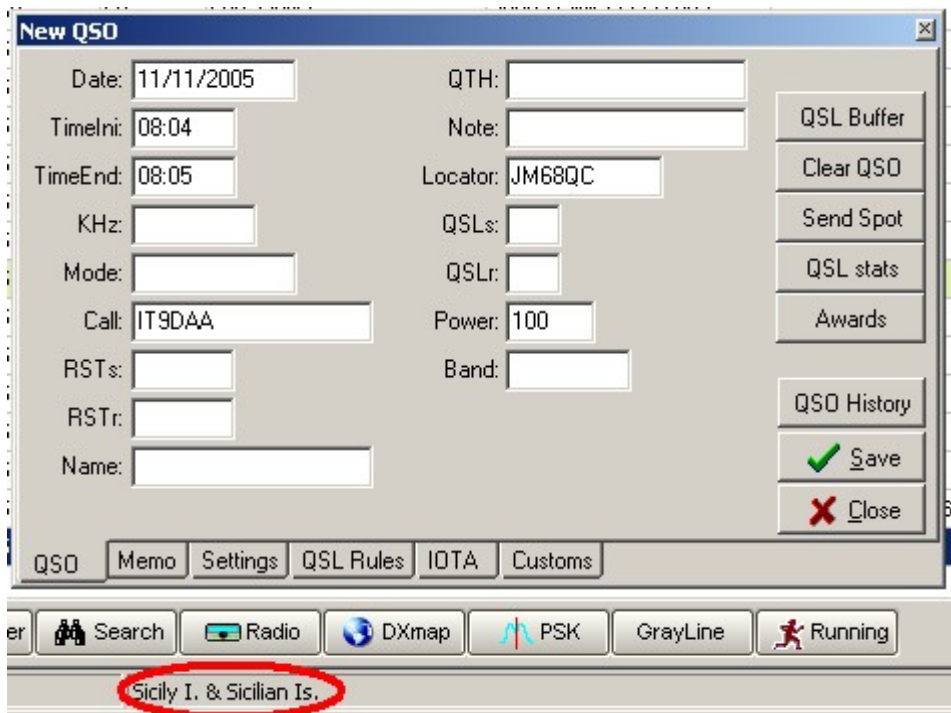
To log /mobile and /sea mobile stations please continue to use the other notation:
IK1GPG/M e IK1GPG/MM

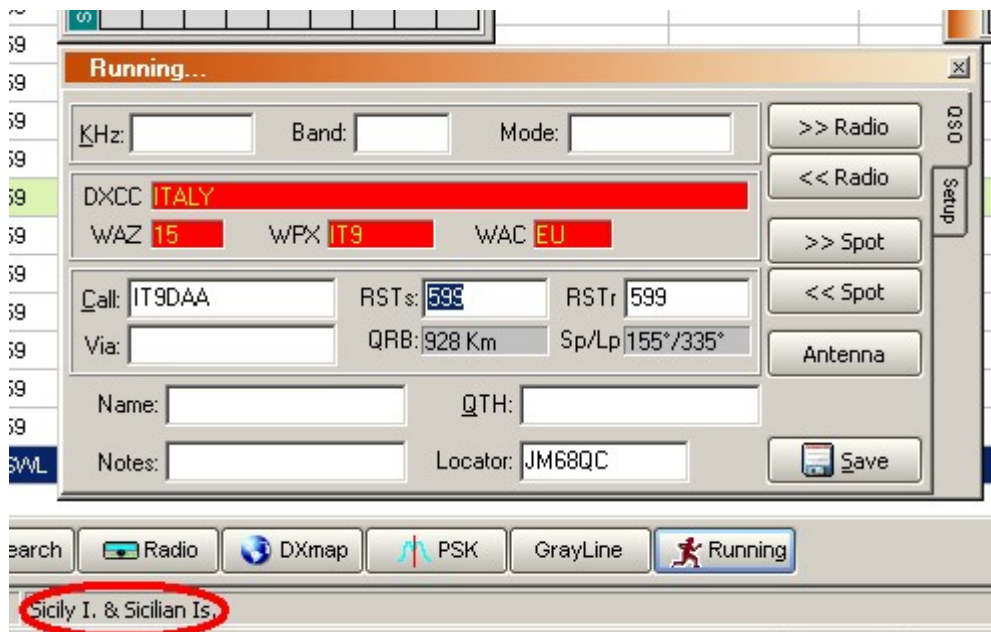
#011

In quick search for Date field, has been added the automatic Date expansion so dates as ddmmyy or dd/mm/yy or mmddyy or mm/dd/yy will be expanded to your selected date format.

#012

The CHECK recognition engine provides country related notes on the status bar during logging of a new callsign, unfortunately these notes were not visible because the space was too small to contain them. Now the notes are fully visible on the right part of the status bar.





#013

Added polling mode for Kenwood transceivers (only on radio 1). The polling mode is necessary for the management of TS2000b. The driver will be distributed on the site.

#014

Few user reported us about a problem (that we were not able to reproduce), caused from the lost of date format. Date and Time format is now forced, the problem should now be fixed.

#015

The resize of Custom Award window didn't work well. during the resize, sometimes, fields were visually duplicated.

#016

Added the possibility to have in real time the DX time of the correspondent both from the window, both from running The Dx-Time button of Time panel can be still used to show DX-Time previously logged QSO.

#017

The buttons to exclude [>>] and include [<<] all the fields were working with inverted logic.

EasyLog 5 Module ADIF converter – 5.0.0.14

#018

Problem importing .ADI files if BAND field was missing

We want to thank all beta testers for their support