

By Steve Ford, WB8IMY

# EasyLog5

**E**asyLog5 is a complex piece of software. That is both a compliment and a caution.

This is not merely a computerized ham log. EasyLog5 will control your radio (if your radio has computer-control capability), manage awards, allow you to send CW, send and receive PSK31 and PSK63, send pre-recorded audio (“voice keyer”), monitor your favorite DX cluster and more.

And when I say “more,” I really mean *much* more. The folks at Microware Software have done their utmost to create the ultimate do-everything Amateur Radio application for Windows. Whether they’ve succeeded is ultimately up to the judgment of each user. One thing is certain, though: with its multiplicity of features, EasyLog5 takes some time to explore and master. Does that mean that “EasyLog” is an oxymoron? Not at all. Each function is easy to use; it is just that there are so many of them!

## Tailoring EasyLog5 to Yourself

Like most EasyLog5 users, I find that I use some features frequently and others not at all. I love the ability to have up to five separate logs open at once, jumping between them by clicking on the folder tabs at the right side of the main window.

As a PSK31 operator, I found this portion of EasyLog5 particularly enjoyable. My only gripe is that one of the receive windows prints yellow text on a red background. That’s difficult for my middle-aged eyes to discern and there is no way to change the color scheme.

I used the radio control feature with my Yaesu FT-897 transceiver and it worked quite well. A small window pops up and allows you to select frequencies and modes as you please.

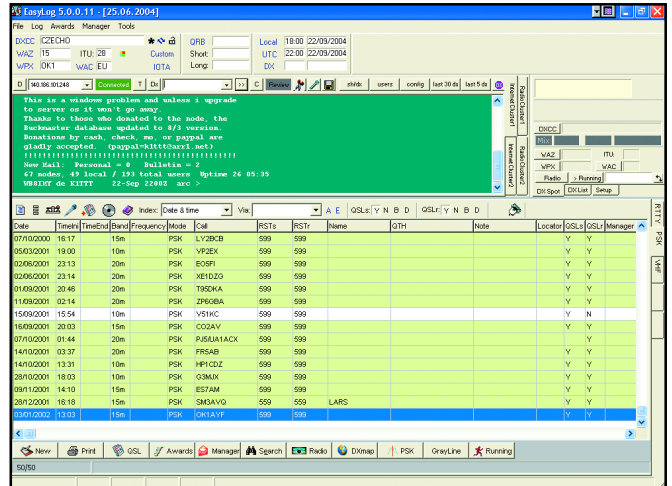
The DX cluster function is terrific, especially in its ability to filter spots. For example, I set mine up to show *only* RTTY spots from North American stations, on 40-10 meters, for DXCC entities I haven’t worked or confirmed. On busy evenings when I can’t spend hours at the radio, this is a wonderful feature.

Perhaps my favorite EasyLog5 feature is the “Running” mode. In this mode you are presented with multiple QSO entry and checking windows. During a contest, or during normal operation, you can type in a call sign and instantly know if you need that zone, prefix, state, DXCC entity, etc for an award or contact credit on a given band or mode.

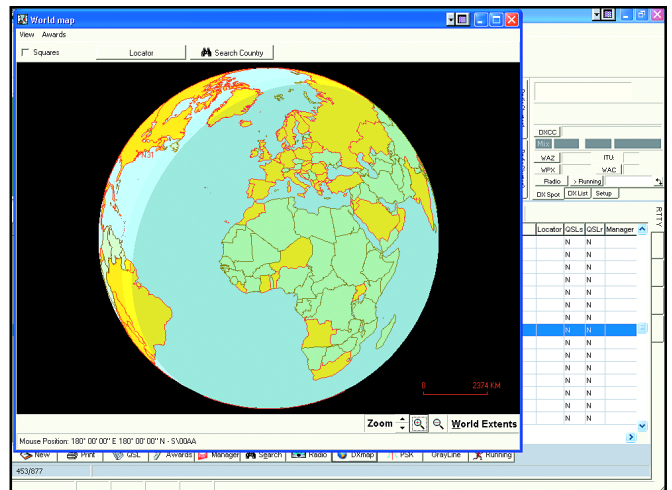
## My Wish List

EasyLog5 has almost everything I could ask for in a station logging/management application. But like anyone else, I have my wish list for future versions.

- I wish EasyLog5 supported the VHF/UHF Century Club award with the ability to quickly tell me which grid squares I’ve worked and confirmed, especially in the Running mode.
- I wish some of the remnant Italian language text labels (Microware is an Italian company) were rendered in English. In the world map display, I know “sole” means “sun,” but it is still a little jarring.
- I wish I didn’t have to input my approximate location as a six-character grid designator. Most hams in the US only use four-character grid square designations, such as “FN31.”



The EasyLog5 main window.



The world map window. In this instance, the DXCC entities I've confirmed on RTTY are highlighted in yellow.

All this aside, EasyLog5 is still a highly capable, well-designed application. If you are curious, my advice would be to download the free trial version at [www.microwaresoftware.net/trial/trial\\_eng/](http://www.microwaresoftware.net/trial/trial_eng/) and give EasyLog5 a spin. Just bear in mind that you probably won't be able to fully explore EasyLog5 in one sitting. Be patient, take your time and, above all, read the manual.

*Manufacturer: Microware Software. Distributed in the United States by J. B. Sims Services LLC, PO Box 550895, Dallas, TX 75355-0895; [jbsims\\_services.home.att.net/](mailto:jbsims_services.home.att.net/). \$89.54. System requirements: Pentium or AMD processor, 400 MHz or better, RAM 128 MB or greater, Windows XP, 2000 or NT.*